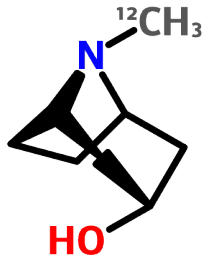


Tropine



2,3-Dihydro-3 α -hydroxytropidine; 1 α H,5 α H-Tropan-3 α -ol

$\text{C}_8\text{H}_{15}\text{NO}$

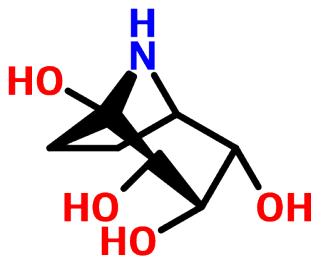
[120-29-6]

Mol. wt 141.21

Found in *Scopolia carniolica* and *Atropa belladonna* (Solanaceae); and in bindweed, *Convolvulus arvensis* (Convolvulaceae).

Highly toxic. Implicated in the poisoning of horses which have ingested bindweed.

Calystegin B₂



Calystegine B₂; 1,2,3,4-Tetrahydroxynortropane

$\text{C}_7\text{H}_{13}\text{NO}_4$

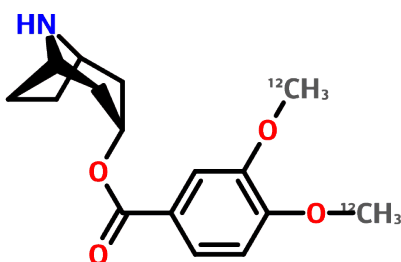
[127414-85-1]

Mol. wt 175.18

First isolated from *Calystegia sepium* (Convolvulaceae); also present in *Convolvulus* spp., in *Datura wrightii* and in leaves of *Solanum tuberosum*, *S. melongena*, *S. dulcamara*, *S. dimidiatum* and *S. kwebense* (Solanaceae).

Potent inhibitor of β -glucosidase. May be responsible for neurological disorders in livestock feeding on *Solanum* leaves.

Convolveine



O-Veratroylnortropine

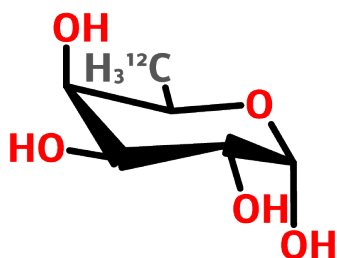
$C_{16}H_{21}NO_4$

[537-30-4]

Mol. wt 291.35

Widespread in the Solanaceae, including *Datura*, *Physalis* and *Salpichroa* spp., in the *Convolvulus* spp. (Convolvulaceae), and also in the mangrove, *Bruguiera* spp. (Rhizophoraceae).

Fucose



α -D-Fucopyranose; L-Fucose; 6-Deoxy-L-galactose; L-Galactomethylose; Rhodeose

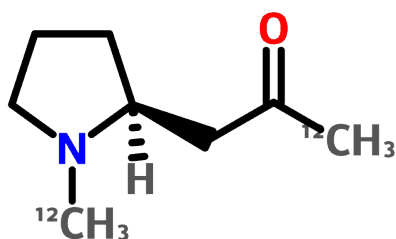
$C_6H_{12}O_5$

[2438-80-4]

Mol. wt 164.16

Most abundant occurrence of L-fucose is in polysaccharide combination in seaweeds, e.g., *Fucus* spp. (Fucaceae), but also present in higher plant polysaccharides (e.g. in gum tragacanth, q.v.). The D-fucose [3615-37-0] isomer is uncommon, occurring in saponin form (q.v.) in *Convolvulus* spp. (Convolvulaceae).

(-)-Hygrine



$C_8H_{15}NO$

[496-49-1]

Mol. wt 141.21

An intermediate in tropane alkaloid (q.v.) synthesis, and commonly found in plants which contain these alkaloids, e.g., in *Atropa* spp. (Solanaceae), *Erythroxylum* spp. (Erythroxylaceae), and *Convolvulus* spp. (Convolvulaceae). Also, it is found in *Dendrobium*spp. (Orchidaceae) and *Cochlearia* spp. (Cruciferae).